

Hilton Toronto

145 Richmond St W, Toronto, ON M5H 2L2
416-869-3456
www.hilton.com/en/hotels/torhihh-hilton-toronto

BUILDING ACCESS

Entrances to the Building

The main entrances are on the South side of Richmond St. (North side of the building) and the East side of University Ave. (West side of the building)



The Loading Dock Entrance is on the East side of the building down “Lane West York South Richmond”





Security Contact

Security - 416-677-6758

SIGN-IN PROTOCOL

There is no Sign-In protocol at this facility. Meet with your Crew Lead or Client Supervisor at the established meeting location.

EMERGENCY PLANS

IN CASE OF FIRE

UPON DISCOVERY OF FIRE
Leave fire area immediately.
Close all doors behind you.
Sound the fire alarm.
Pull the manual station.
Leave the building by the nearest exit.

DIAL 911

DO NOT USE ELEVATOR

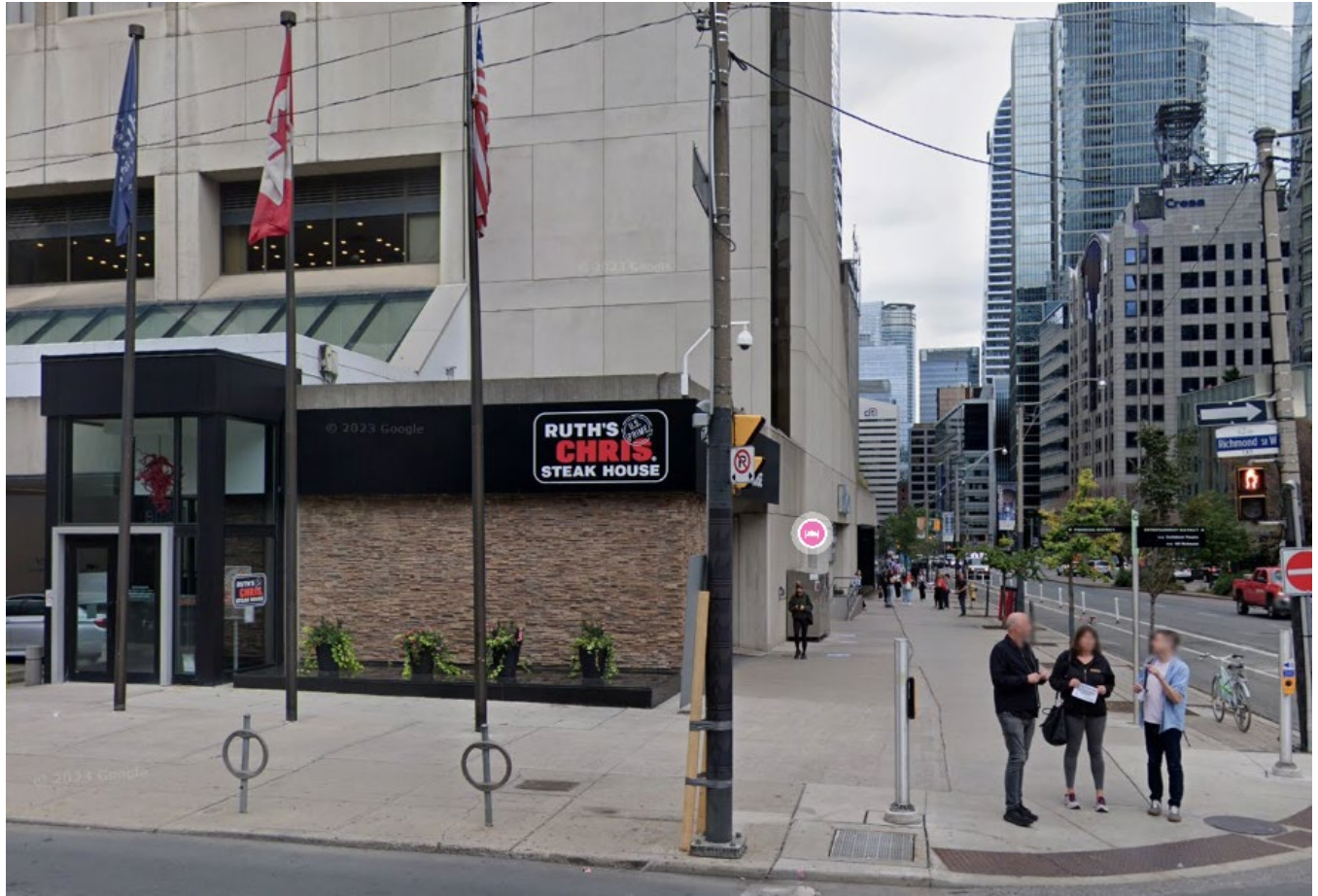
UPON HEARING FIRE ALARM
Leave the building by the nearest exit
Close doors behind you.

CAUTION
If smoke is heavy in the corridor, it may be safer to stay in your area. Close door and place wet towel at base of the door.
If you encounter smoke in stairway, use alternate exit.

REMAIN CALM

COMMON MUSTER POINT

The Southeast corner of Richmond St. W. and University Ave. In front of the Ruth's Chris Steak House





NEAREST HOSPITALS

Toronto General Hospital
200 Elizabeth St, Toronto, ON M5G 2C4
(416) 340-3131

St. Michael's Hospital
36 Queen St E, Toronto, ON M5B 1W8
416-360-4000

LINKED BUILDINGS

Adelaide Place via The Path
The PATH



FLOOR PLANS

