



MTCC South Building

222 Bremner Blvd, Toronto, ON M5V 2T6
1-416-585-8000
<https://www.mtccc.com/>

BUILDING ACCESS AND CONTACT

Entrances to the Building

Main Entrance to the building is on the North side of Bremner Blvd.
From the Parking Garage attached at the south end of the building
From the Skywalk which attaches to both the North and South Buildings

Key Contacts

EMERGENCY NUMBER
416-585-8160 OR 8160 FROM CLOSEST HOUSE PHONE

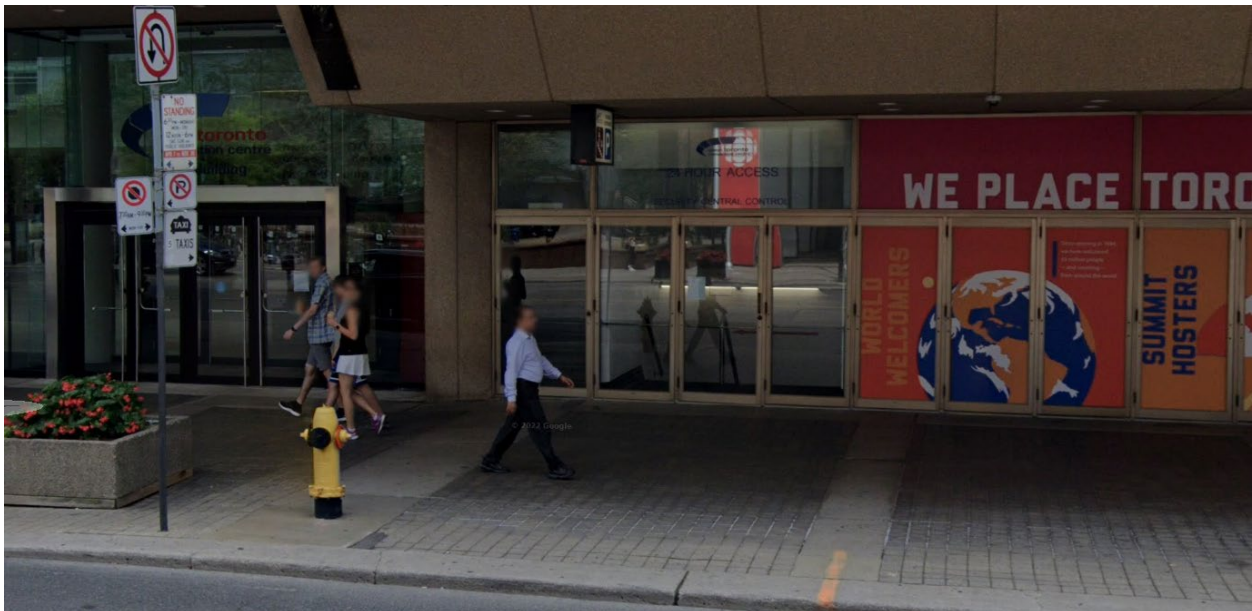
SECURITY CONTROL ROOM
416-585-8360

MTCC SOUTH DUTY PHONE
416-529-0388

SIGN-IN PROTOCOL

No sign-in protocol necessary, unless the need for a keycard arises.

→ To sign out a keycard, you must go to the Security Office in the North Building and leave a piece of photo identification. The entrance to the Security Office is from the 24-hour Access Door seen in the photo below.



After-hours Protocol

Enter the building from the 24-hour Access Door in the North Building. Go to the security desk. They will assist you in getting to the floor you need to be on.



EMERGENCY PLANS



Emergency Procedures

NORTH AND SOUTH BUILDING
EMERGENCY NUMBER IS **(416) 585-8160 OR**
8160 FROM CLOSEST HOUSE PHONE

IN CASE OF FIRE EMERGENCY

IF YOU SEE FIRE OR SMOKE

- Leave the fire area immediately by the nearest exit.
- Close doors behind you.
- Activate the nearest fire alarm pull station.
- Leave building by nearest exit.

IN CASE OF FIRE ALARM

**IF YOU HEAR A FIRE ALARM
ALERT SIGNAL (SLOW BEEPING SOUND)**

- Prepare to leave the building.
- Await instructions over the loud speakers (approximately one minute).

**IF YOU HEAR A FIRE ALARM
EVACUATION SIGNAL (FAST BEEPING SOUND)**

- Leave the building via the nearest exit.
- Do not use elevators.
- If you encounter smoke in the stairway, use alternate exits.
- Once outside building, stay clear and do not return until declared safe to do so by the Fire Official.
- Do not attempt to remove vehicles from parking garage or loading docks.
- Follow instructions over loud speakers or from security staff.

Remain calm...Do not use elevators

IN CASE OF A MEDICAL EMERGENCY

- Dial emergency number for security office (416) 585-8160 or 8160 from closest house phone.
- Give exact location.
- Give detailed information of the injury and the cause of the injury.
- Remain in contact with security until emergency personnel have arrived.

FOR NON-EMERGENCY SITUATIONS PLEASE CALL (416) 585-8360 OR 8360

If you require this document in an accessible format, please contact us at (416) 585-8199 or accessibility@mtccc.com.
If you require additional support or an accommodation in the event of an emergency evacuation,
please notify Security upon your arrival to the Centre at (416) 585-8360.

COMMON MUSTER POINT

The North entrance to Roundhouse Park on the south side of Bremner Blvd.





NEAREST HOSPITALS

St. Michael's Hospital
36 Queen St E, Toronto, ON M5B 1W8
416-360-4000

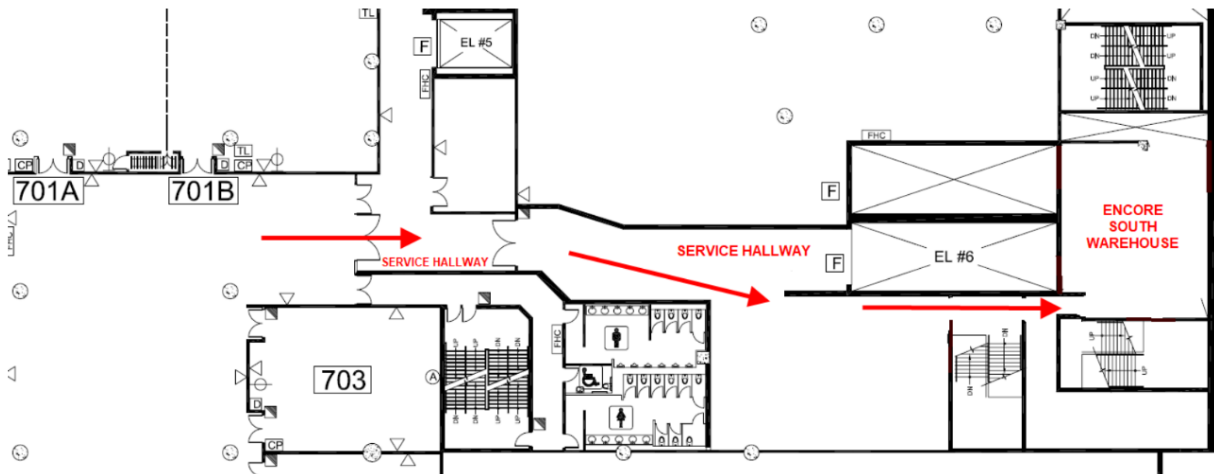
Toronto Western Hospital
399 Bathurst St, Toronto, ON M5T 2S8
416-603-2581

LINKED BUILDINGS

MTCC North Building
MTCC North Parking Garage
Skywalk
InterContinental Toronto Centre, an IHG Hotel

FLOOR PLANS

Floor Plan: Directions to Encore South Warehouse



Floor Plan: North and South Buildings

